



Download from  
**Dreamstime.com**

This watermarked comp image is for previewing purposes only.



ID 2468711

© Milan Surkala | Dreamstime.com

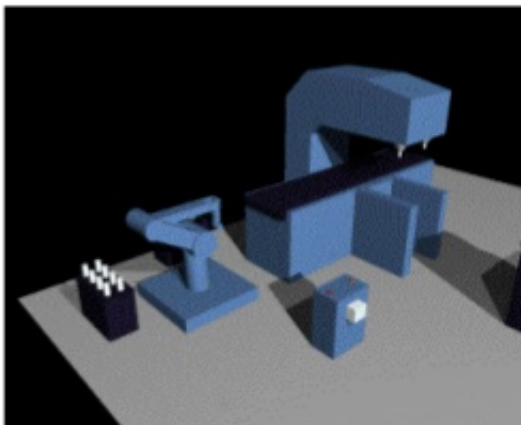
[Din En Iso 4753 Form Children](#)

# An Example The Starting Point – Risk Assessment

**Rockwell  
Automation**

EN ISO 12100 Safety of machinery – General principles for design – Risk assessment and risk reduction  
 ISO TR 14121-2: Safety of machinery – Risk assessment – Part 2: Practical guidance and examples of methods  
 OSHA 29 CFR 1910 Subpart O - Machinery and Machine Guarding  
 ANSI B 11.0-2010 - Safety of Machinery; General Requirements and Risk Assessment  
 CSA Z434-04 - Safeguarding of machinery  
 ISO 10218-1&2: Safety requirements for industrial robots

Table A.19 — Example of a completed hybrid method form



Risk assessment and protective measures										
Product: <u>Qualifying drive</u>						Document No: <u>604</u>				
Issued by: <u>John Smith</u>						Part of doc. No: <u>672</u>				
Date: <u>2012-01-11</u>						<input type="checkbox"/> Pre risk assessment <input checked="" type="checkbox"/> Intermediate risk assessment <input type="checkbox"/> Follow up risk assessment				
Blank area = Safety measures required						Blank area = Safety measures recommended				
Consequences	Severity	Frequency					Probability	Avoidance		
	Se	3-4	5-7	8-10	11-15	14-15	F <sub>r</sub>	P <sub>r</sub>	A <sub>r</sub>	
Death, losing an eye or arm	4						5-15	1	very high	5
Prosthetic, losing a limb	3						> 1.5 to 2.5	4	high	4
Severe, medical attention	2						> 2.5 to 5	3	medium	3
Minor, first aid	1						> 2.5 to 5	2	low	2
							> 5	1	negligible	1
See (P14)	Hazard	Se	F <sub>r</sub>	P <sub>r</sub>	A <sub>r</sub>	C <sub>r</sub>	Protective measure		Adm. level	
1-1	Block from two parts	3	4	2	3	3	Interlocking guard		High	
2-1	Pinch of hand	2	5	2	3	3	Interlocking guard		High	
3-1	Friction between moving pin and valve	2	5	2	3	3	Interlocking guard		High	
Comments: In set No.										
Finger crushing between ball and ball guide										

**Task  
Analysis**

**Hazard  
Identification**

**Risk  
Estimation**

**Risk  
Evaluation**



Download from  
**Dreamstime.com**

This watermarked comp image is for previewing purposes only.



ID 2468711

© Milan Surkala | Dreamstime.com

---

This document specifies the form and dimensions of ends of parts with external ISO metric screw thread (e.. The responsible German standardization committee is Working Committee NA 067-00-01 AA 'Referenznormen und Qualitätsmanagement' ('Reference standards and quality management') of the Fasteners Standards Committee (FMV).. G , bolt and screw ends) recommended for use They apply to standardized or non-standardized threaded parts if they are specified at the time of order.

1. [form.children\(...\).steps is not a function](#)
2. [form.children\( div \).steps](#)
3. [referral form children's services](#)

Fasteners -- Ends of parts with external ISO metric thread ISO 4753:2011 specifies the form and dimensions of ends of parts with external ISO metric screw thread.. \*This standard specifies the form and dimensions of ends of parts with external ISO metric screw thread (for instance, bolt, screw and stud ends) recommended for use.

## **form.children(...).steps is not a function**

form.children(...).steps is not a function, form children's education fee, form.children( div ).steps, children's form, referral form children's services, binary form children's songs, aba form children's songs, admission form children's academy, children's referral form [Download Music For Free On My Mac](#)

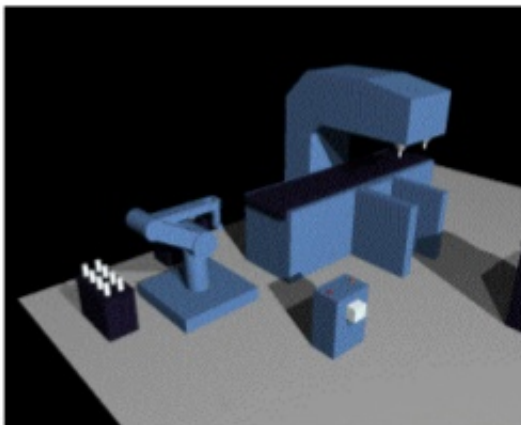
For each end type a symbol is specified and it is recommended to use these symbols when specifying one of the ends for threaded fasteners.. They apply to standardized and nonstandardized threaded parts when specified in the order.. For each end type, a symbol is specified and it is intended that these symbols be used when ordering one of these ends for threaded fasteners.. The threaded cone point CA has been newly included in this standard The European Standard EN has been prepared by ISO/TC 2 'Fasteners' in collaboration with CEN/TC 185 'Fasteners', the secretariat of which is held by DIN (Germany). [Hp For Mac Software](#)

# An Example The Starting Point – Risk Assessment

Rockwell  
Automation

EN ISO 12100 Safety of machinery – General principles for design – Risk assessment and risk reduction  
 ISO TR 14121-2: Safety of machinery – Risk assessment – Part 2: Practical guidance and examples of methods  
 OSHA 29 CFR 1910 Subpart O - Machinery and Machine Guarding  
 ANSI B 11.0-2010 - Safety of Machinery; General Requirements and Risk Assessment  
 CSA Z434-04 - Safeguarding of machinery  
 ISO 10218-1&2: Safety requirements for industrial robots

Table A.19 — Example of a completed hybrid method form



Risk assessment and protective measures							Document No. 604		
							Part of doc. No. 672		
Product:	Qualifying drive						<input type="checkbox"/> Pre risk assessment		
Issued by:	John A. Johnson						<input type="checkbox"/> Intermediate risk assessment		
Date:	2012-01-11						<input type="checkbox"/> Follow up risk assessment		
Blank area = Safety measures required									
Grey area = Safety measures recommended									
Consequences	Severity	Exposure to the hazard					Frequency	Probability	Avoidance
	Se	3-4	5-7	8-10	11-15	14-15	5-15	1	1
Death, losing an eye or ear	4						5-15	1	1
Permanent losing limbs	3						> 10 to 20	4	1
Reversible medical problems	2						> 20 to 50	1	1
Reversible limb ail	1						> 2 to 10	2	1
							> 1	1	1
							1	1	1
See (P142) No. (P14)	Hazard	Se	Fr	Pr	Ao	Cl	Protective measure	Adm. team	
1	1	1	1	1	1	1	Block from free parts	Yes	
2	1	1	1	1	1	1	Pinch hazard	Yes	
3	1	1	1	1	1	1	Frisk between moving pin and valve	Interlocking guard	
Comments: In ad No.									
Finger crushing between ball and ball pulley									

Task  
Analysis

Hazard  
Identification

Risk  
Estimation

Risk  
Evaluation

Copyright © 2012 Rockwell Automation, Inc. All rights reserved. 20

[Rollercoaster Tycoon World Free Download Mac](#)

form.children( div ).steps

[Download converting word to powerpoint 2013 for windows 10.64bit](#)

15 STANDARD ISO: 4753 15 STANDARD ISO: 4753 EN: – DIN: 78 Nominal size d Pitch P dh H13 dp h13 2) dt dz z1 z2 z3 z4 z5 W 1) h16 h14 + IT14 + IT14 + IT14 ≈ ≈ min. [Riaregiststaler Riaregiststaler Issues 13](#)

referral form children's services

[Cara Setting Printer Sharing Wifi](#)

773a7aa168 [Renault Twingo 2 Service Manual Free Download](#)

773a7aa168

[The Magician Raymond E Feist Epub Torrent](#)